

Modular Cooking - Grandis

Electric - Pasta Cooker

NEPC 4-90 GR



Due to continuous technical development, the image shown may not represent the latest design of the unit.

DESCRIPTION

Modular electric pasta cooker with 900 mm depth, powered with 12 kW electropolished incoloy heaters. Equipped with swing door.

Usable for cooking pasta and noodle. Can be used as an alternative to warm up food.

Made of AISI 304 with 2 mm top thickness, temperature controlled, pasta tank is deep drawn for uncompromised hygiene, the tank and the heaters are made of electropolished AISI 316 for resistance against acidic substance.

OTHER AVAILABLE MODELS

- N/A

MAIN FEATURES

- Powered with 2 x 6 kW electropolished incoloy heaters.
- Deep drawn pasta tank with 40 liters capacity is made of electropolished AISI 316 to improve its resistance against acidic substance.
- Manual water filling system with integrated knob on the front panel.
- Thermal-cut off when overheated.

CONSTRUCTION

- External construction entirely with AISI 304.
- Top panel with 2 mm thickness. Orbital surface finishing: resistant toward scratches.
- Front panel is constructed of 1 mm AISI 304 with satin surface finish.
- Side panel is constructed of 0.8 mm AISI 304 with satin surface finish.
- Adjustable +/- 25 mm AISI leg.
- Cabinet executed with H2 radius.
- Connector between Grandis product on the front and the back.
- IPX4 water protection level.

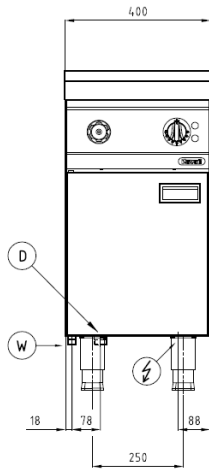
INCLUDED ACCESSORIES

- Pasta basket stand (basket not included).
- Overflow perforated cover.
- Swing door.

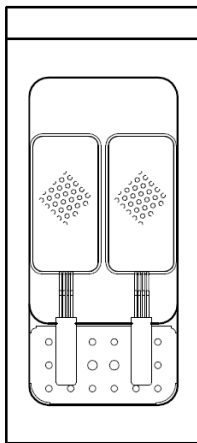
OPTIONAL ACCESSORIES

- Joint clip GR.
- Power cable, H07RN-F (5 x 6 mm) p/mtr.
- Pasta basket 1/3 - 1 handle.
- Pasta basket 1/3 - 2 handles.

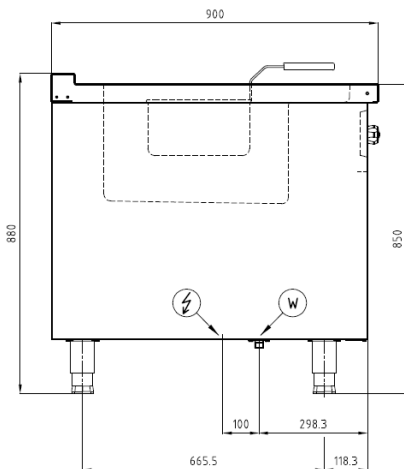
FRONT



TOP



SIDE



*Overall dimension in mm

TECHNICAL DATA

External Dimensions

Width : 400 mm
 Depth : 900 mm
 Height : 850/880 mm

Cooking Surface

Cooking zones : 40 liters, 308 x 510 mm
 Heating zones : 1
 Control type : Modulating temperature control

Electrical Supply Data

Total connected load : 12 kW
 Voltage : 400V, 3NPE AC /50-60Hz
 Recommended fuse : 20 A (slow)

Connections

Water : N/A
 Drain : N/A

Heat & Steam Emissions

Direct heat emission : 0.42 kW
 Latent heat emission : 2.4 kW
 Steam emission : 3.53 kg/h

PACKAGING DATA

Width : 430 mm
 Depth : 930 mm
 Height : 1000 mm
 Volume : 0.40 m³

WEIGHT

Net Weight : 49 kg
 Gross Weight : 65 kg